

# • Mediator

Mediator is a software that enables CMM users to work with any CMM software of their choice, while keeping their existing CMM controller in place (with no hardware retrofit)

## Applications

Mediator allows CMM users to drive their CMM with any CMM software. For example:

- Mediator enables PC-DMIS to drive a Mitutoyo machine
- MCOSMOS to drive any Zeiss machine, etc.

Mediator supports both tactile and scanning probes as well as certain line-laser probes

## Features

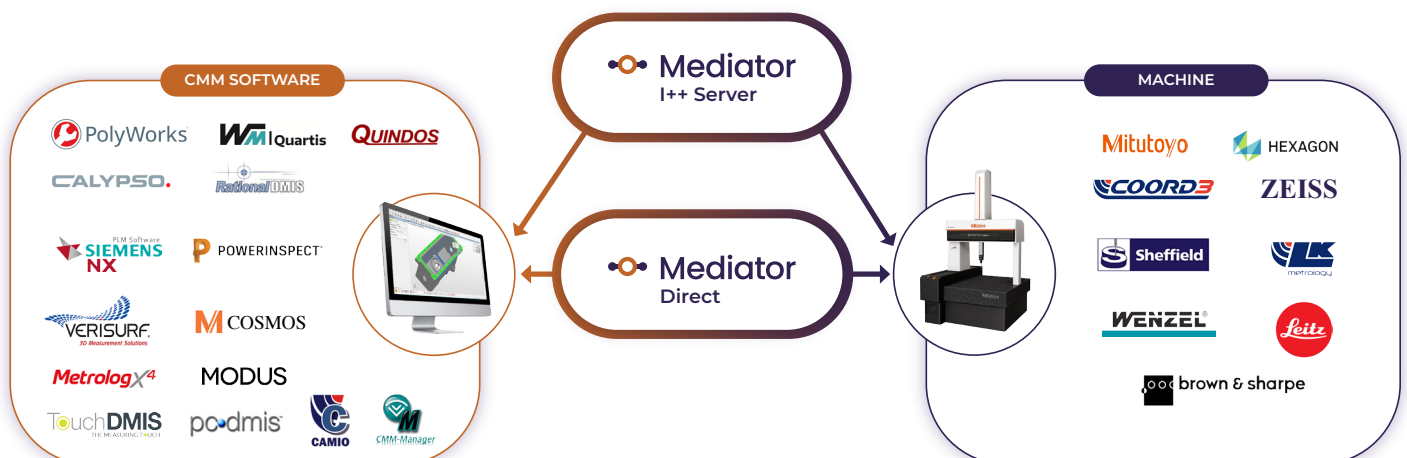
Mediator is available in two versions

### Mediator I++ server

A universal I++ server, seamlessly connecting CMM inspection software with its I++ client module. Users can easily configure Mediator to interface with their CMM controller, defining probe heads and sensors for optimal performance. Once set up, the part program becomes readily available for execution.

### Mediator Direct

Facilitates a direct connection between inspection software and existing CMM controllers, eliminating I++ dependencies. With this capability, any software can seamlessly run on any CMM.



## Benefits



### Keep your existing software and part-programs untouched

Retrofit your CMM without the need to do any hardware upgrading, part-program rewriting, or I++ protocol adaptation



### Dramatically reduce retrofitting time & cost

Software retrofit only takes a few hours.



### Enhanced Error Mapping Compensation for Precise Measurements

Mediator enables accurate error mapping across various CMM brands. It can directly read and compensate any CMM with almost any error map known in the market, including maps of Hexagon (DEA, B&S), Mitutoyo, Zeiss, LK, Wenzel, Renishaw, and more.



### CMM Flexibility

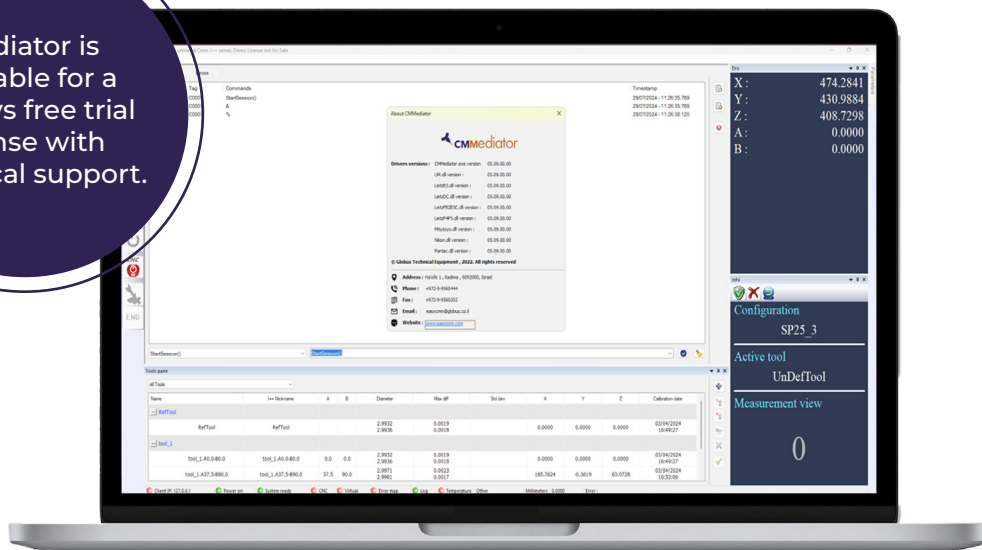
Single metrology software for your different CMM brands.



### Software Versatility

Mediator can work with several different inspection software running on the same machine.

Mediator is available for a 30 days free trial license with technical support.



## About easyCMM

EasyCMM is a pioneering technology company dedicated to revolutionizing the Coordinate Measuring Machine (CMM) industry. With over 40 years of experience in metrology, we leverage our deep technical expertise and strong partnerships with leading CMM vendors and service providers. Our innovative solutions enable seamless integration and interoperability across various CMM brands and software, reducing costs and enhancing efficiency for our clients.

At EasyCMM, we are committed to delivering cutting-edge technology that extends the lifespan of your CMM equipment and optimizes your calibration and retrofitting processes.

Legal Notice: All trademarks, logos, brand names, and product names used in this brochure are the property of their respective owners. The use of these trademarks, logos, brand names, and product names does not imply endorsement by or affiliation with these companies. They are used for identification purposes only. All rights reserved by their respective owners. EasyCMM acknowledges and respects the intellectual property rights of these entities.